



FPT Runaround Project Update

Hector Hartmann
Project Coordinator, Rail

May 5th, 2025



Background

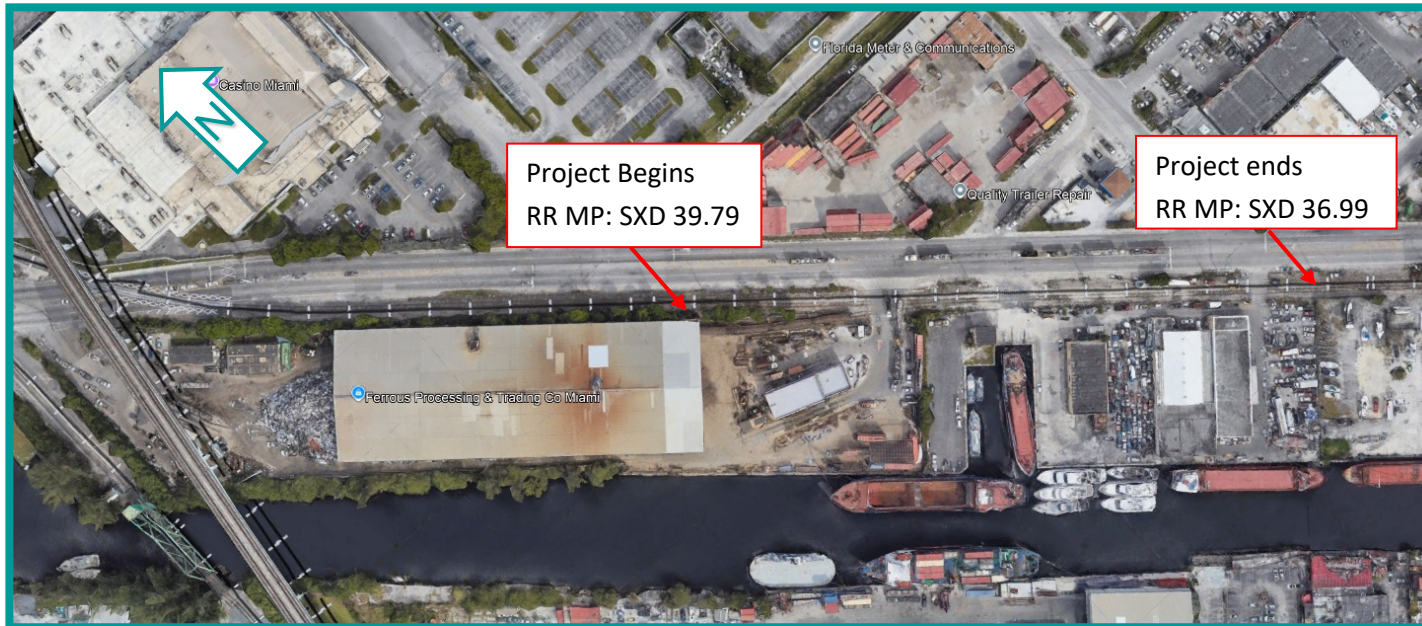
- The South Florida Rail Corridor (SFRC), which includes the Downtown Lead is owned by the Florida Department of Transportation (FDOT)
- The SFRC is managed by FDOT-District 4 Rail Office.
- The South Florida Regional Transportation Authority (SFRTA) has an operating agreement with FDOT to operate and maintain the SFRC.
- The SFRTA maintains Tracks, Bridges, Signals, Crossings, Operating Facilities.
- The Downtown Lead is only being used for freight operations by CSX Transportation

General Information

- Purpose: Replace approximately 1,100' of run-around siding railroad track. Renovation will improve freight operations on the Downtown Lead. It will save time and money as freight trains may not need to use the run-around at the end of the Downtown Lead resulting in less freight traffic operating through 31 road crossings, and therefore reducing the likelihood of a train/vehicle collision. It will also benefit current and future customers on the Downtown Lead as they will be served more efficiently. It is estimated that the project will generate additional rail shipments at 780 carloads per year.
- Funding: FDOT
- Estimated Cost: \$1,315,500.00
- Construction Start Date: 4/1/2025
- Duration: 45 days

Location

- Location: The Ferrous Processing and Trading (FPT) runaround project is located in the Downtown Lead of the SFRC – Just off the mainline and paralleling the Miami River.



Scope

- Complete removal and disposal of existing siding trackage and reconstruction of trackage with
 - New rail,
 - New timber ties,
 - Ballast,
 - Prepare subgrade,
 - New turnouts,
 - Joint bars,
 - Anchors
- Install approximately 1,100' of chain link fence along the Right of Way.
- Rebuild three PRIVATE road crossings (Siding and Main Track) with pre-cast concrete roadway surface panels .
- All proposed work complies with American Railway Engineering and Maintenance-of-way Association (AREMA) and CSX Standard Specifications and best practices.



RTA

**SOUTH FLORIDA
REGIONAL
TRANSPORTATION
AUTHORITY**

Aerial View



QUESTIONS?